

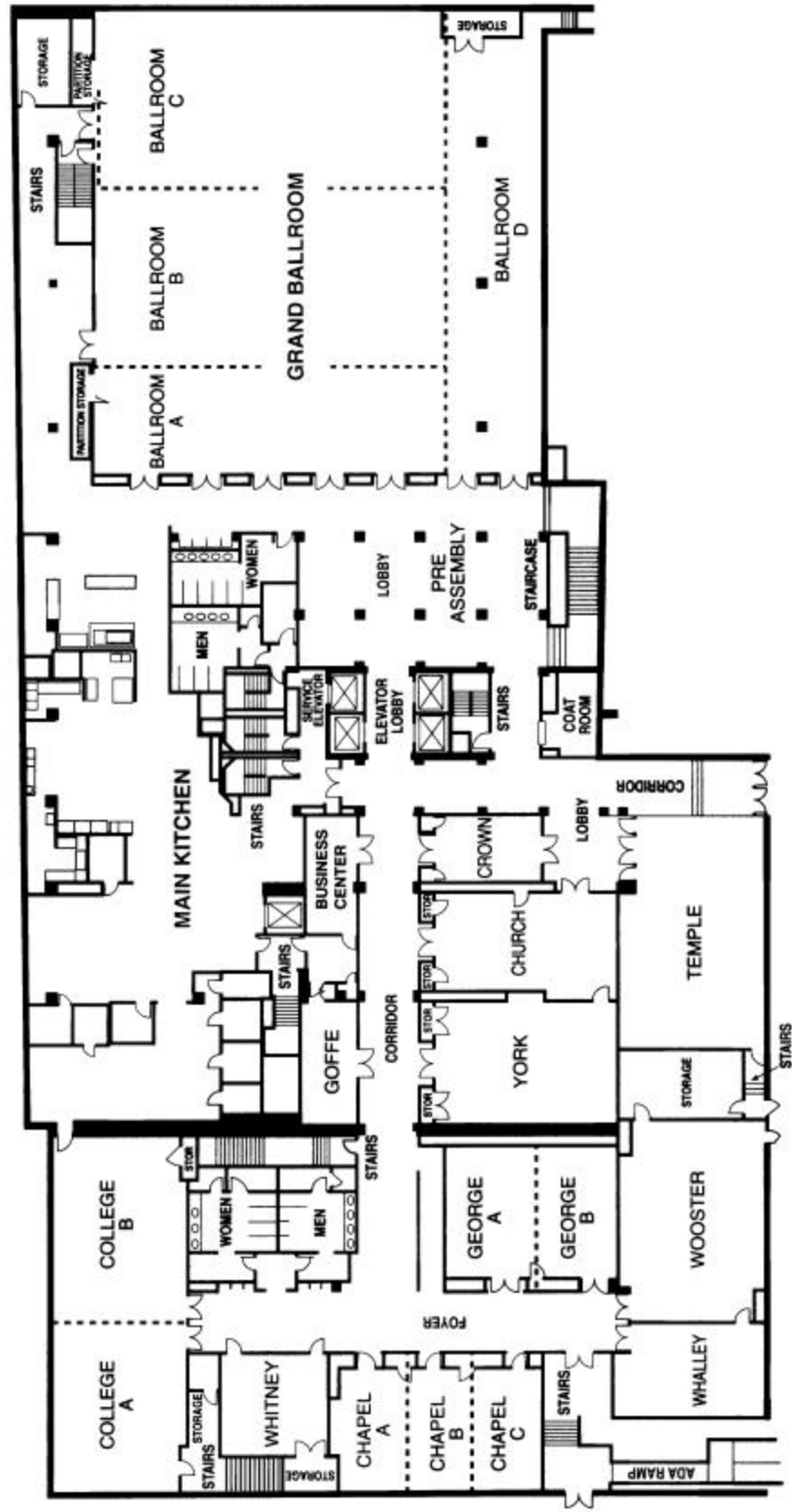


NAHSL/NY-NJ 2001
Information & Technology:
Fitting the Pieces Together

PROGRAM

Omni New Haven Hotel at Yale
New Haven, CT
October 14-16, 2001

Floor Plan Omni New Haven Hotel at Yale





NAHSL/NY-NJ 2001
Information & Technology:
Fitting the Pieces Together

2001 Conference Planning Committee

Chair	Ed Donald
Co-Chair	Evelyn Breck Morgen
NY/NJ Chapter Liaison	William Self
Hotel	Daniel Dollar, Chair
Program	John Stey, Chair, Janie Kaplan, Kim Lavoie, Norma Pellerin
Hospitality	Judy Spak, Marilyn Pitman, Co-Chairs, Roseanne Krzanowski, Kathy Giotsas, Matthew Wilcox, Jan Glover, Pat Wales, Lynn Sette
Scholarship	Robin Hassig, Chair, Nancy Goodwin, Charles Greenberg, Pauline Kruk, Kathy Stemmer-Fruento, Amy Frey
Publicity	Hongjie Wang, Marion Holena Levine, Co-Chairs
Exhibits	Jill Livingston, Chair, Nancy Deet, Pam White, Pat Wales, Katalin Gyorgyey
Registration/ Evaluations	Janice Swiatek-Kelley, Chair, Lorna Wright, Jill Golrick, Carolyn Wilcox
Continuing Education	Janet Crager, Chair, Jeannine Gluck, Cora Damon, Heather Blunt
Sponsorship	R. Kenny Marone, Chair
Website	Mark Gentry, Chair, Gillian Mayman
Member at Large	Kathy Stemmer-Fruento

North Atlantic Health Sciences Libraries Executive Board 2000-2001

Chair	Mary Ann Slocomb, RI
Chair-Elect	Ed Donald, CT
Past Chair	Patty Kahn, ME
Secretary	Kathy Brunjes, ME
Treasurer	Marj Anderson, ME
Conference Chair 2001	Ed Donald, CT
Conference Chair 2002	Karen Odato, NH
Chapter Council Representative	*Suellen Jagels, ME /Janice Kaplan, CT
Chapter Council Alternate	*Janice Kaplan, CT/Debbie Sibley, MA
MLA Membership Representative	Marybeth Edwards, MA
Committee Chairs	
Archives	*Sydney Ann Fingold, MA/Carole Foxman, MA
Bylaws / P&P Manual	*Debbie Sibley, MA/Patty Kahn, ME
Credentialing for MLA	Joan Yanicke, MA
Education	Janet Crager, RI
Electronic Communications	Lida Douglas, VT
Finance	Marj Anderson, ME
Government Relations	Barb Ingrassia, MA
Marketing	Len Levin, MA
Membership	Jeanene Light, VT
News Notes	*Norma Pellerin, NH
Nominating & Awards	Patty Kahn, MA
Program	Ed Donald, CT
Scholarship	Kathy Brunjes, ME
IFLA Representative	*Tovah Reis, RI
RML Representative	*John Stey, CT/Debbie Sibley, MA
State Representative-ARIHSL	Kim Lavoie, RI
State Representative-CAHSL	John Stey, CT
State Representative-HSL-NH/VT	Alice Reed, NH
State Representative-HSLIC	Happy Copley, ME
State Representative-MAHSLIN	Debbie Sibley, MA

* = outgoing chair during the year



NAHSL/NY-NJ 2001
Information & Technology:
Fitting the Pieces Together

Saturday October 13, 2001

3:30pm – 6:30pm Registration, Hospitality, and Scholarship Tables Open
Pre-Assembly area

Sunday October 14, 2001

7:00am – 5:00pm Registration, Hospitality, and Scholarship Tables Open
Pre-Assembly area

9:00am – noon Resource Library Director's Meeting
Church

Continuing Education Courses

- 8:00am – noon ***Creating Web-based Professional Development Workshops: Introduction to the Basics***
Instructor: Beatrice Kovacs, D.L.S., Associate Professor,
Department of Library and Information Studies, UNC at Greensboro
Computer Lab-Epidemiology and Public Health Library, 47 College Street
- 8:00am – noon ***Access Management: Linking Patrons to Electronic Resources***
Instructor: Terry Plum, Assistant Professor, Simmons Graduate
School of Library and Information Science
Computer Lab-Epidemiology and Public Health Library, 47 College Street
- 8:00am – noon ***A Well-Kept Secret: Health-Related Government, Organization, and Think-Tank Content***
Instructor: Laura Larsson, M.L.S., Clinical Faculty, School of
Public Health and Community Medicine, University of Washington
York
- 1:00pm – 5:00pm ***Concepts in Cardiology***
Instructor: Linda Quirici, RN, MSN, CCRN, Critical Care Clinical
Nurse Specialist, Eastern Connecticut Health Network
College A & B
- 1:00pm – 5:00pm ***Handheld Devices 101: Personal Digital Assistants for Beginners***
Instructor: Laura Larsson, M.L.S., Clinical Faculty, School of
Public Health and Community Medicine, University of Washington
York



NAHSL/NY-NJ 2001
Information & Technology:
Fitting the Pieces Together

- 1:00pm – 5:00pm **Networking for Health Science Librarians**
Instructor: Terry Plum, Assistant Professor, Simmons Graduate
School of Library and Information Science
Computer Lab-Epidemiology and Public Health Library, 47 College Street
- 3:00pm – 6:00pm Exhibit & Poster Setup
Ballrooms A, B, & D
- 5:15pm – 5:45pm NAHSL Finance Committee Meeting
Church
- 6:00pm – 8:00pm Welcome Reception – Peabody Museum
170 Whitney Avenue - Bus transportation available to and from reception.

Monday, October 15, 2001

- 7:00am – 8:00am NAHSL Executive Board Meeting
Worcester
- 7:00am – 3:30pm Registration*, Hospitality, and Scholarship Tables Open
[*except during session times]
Pre-Assembly area
- 7:30am – 3:30pm Exhibits Open and Posters on Display
Ballrooms A, B, & D
- 7:30am – 8:45am Continental Breakfast in Exhibit Hall
Ballrooms A, B, & D
- 8:45am – 9:00am Welcome Remarks
Mary Ann Slocomb, NAHSL Chair
Ed Donnal, Conference Chair 2001
Ballroom C
- 9:00am – 10:00am Keynote Address
Digital Libraries: The Convergence of Content, Service, and Technology
Richard E. Lucier, Librarian of the College, Dartmouth College
Introduced by: Judy Messerle, Countway Library, Harvard
University
Ballroom C



NAHSL/NY-NJ 2001
Information & Technology:
Fitting the Pieces Together

- 10:00am – 10:30am Break in Exhibit Hall
Ballrooms A & B
- 10:30am – 11:30am Keynote Address
Bargaining for Believability: Making Digital Libraries Real
Arnold Hirshon, Executive Director of NELINET
Introduced by: Kendall Wiggin of the Connecticut State Library
Ballroom C
- 11:45am – 12:45pm Lunch
College A & B
- 12:15pm – 1:15pm Poster Presenters will be available for discussion (*listed in back of program*)
Ballrooms A & B
- 11:45am – 12:45pm NAHSL 2002 Planning Committee Meeting
George
- 11:45am – 12:45pm NAHSL CE Committee Meeting
Church
- 12:45pm – 1:15pm Meet the new Region 8 RML
Chapel

SEMINARS

- 1:30pm – 2:45pm ***E-journals: The Darkness Before the Dawn***
Kimberly Parker, Yale University Library
Patricia Regenberg, Mountainside Hospital Library
Ballroom C
- 2:45pm – 3:00pm Break
Ballrooms A & B
- 3:00pm – 4:30pm ***Health Information: Adventures in Local Resources***
Micki McIntyre, HealthyNJ Librarian, University of Medicine and
Dentistry of New Jersey
Virginia Manbeck, New York Public Library
Patricia Gallagher, New York Academy of Medicine
Kate Coburn, Dartmouth Hitchcock Medical Center
Gillian Mayman, Cushing/Whitney Medical Library, Yale University
Ballroom C
- 4:45pm – 5:30pm DOCLINE/NLM Systems and More – Update
Chapel



NAHSL/NY-NJ 2001
Information & Technology:
Fitting the Pieces Together

6:00pm – 7:00pm Reception
Pre-Assembly area & Ballroom D

7:00pm – 10:00pm Banquet
Entertainment: music by “Brad and Brian”
Scholarship raffle winners will be announced during dinner
Ballrooms B & C

Tuesday, October 16, 2001

7:00am – 9:00am Registration* and Hospitality Tables Open
[*except during session times]
Pre-Assembly area

7:30am – 9:00am Buffet Breakfast
Ballroom D

8:00am – 9:00am Concurrent Regional Business Meetings

Region 1 NN/LM Update
Mary Mylenki, New York Academy of Medicine

NY/NJ Chapter Business Meeting
William Self, Medical Library Center of New York
Ballroom B

OR

Region 8 NN/LM Update
Elaine Martin, University of Massachusetts Medical Center

NAHSL Chapter Business Meeting
Mary Ann Slocumb, Rhode Island Hospital
Ballroom C

9:00am – 9:15am Break--bring groups together

9:15am – 10:15am MLA Greetings
Carla Funk, Executive Director of MLA
Mark Funk, Head of Collection Development, Cornell Medical Library
NLM Greetings
Kent Smith, Deputy Director of NLM
Ballrooms B & C



NAHSL/NY-NJ 2001
Information & Technology:
Fitting the Pieces Together

10:15am – 10:30am Break

10:30am – 11:45am ***People: The Most Important Piece of the Puzzle***
Kristen Zarfos, M.D., Surgeon and Assistant Professor of Surgery,
University of Connecticut Health Center, nationally renowned breast
cancer patient advocate.
Congresswoman Rosa DeLauro, U.S. House of Representatives,
Connecticut 3rd District, U.S. Congress
Introduction: Evelyn Breck Morgen, Middlesex Hospital
Ballrooms B & C

12:15pm – 2:00pm CT & NH Joint Planning Committee Luncheon Meeting
York

The Conference Planning Committee
would like to
thank you
for attending the
2001 NAHSL Conference.

Travel safe and be well!

Mark your calendar now:
NAHSL 2002
Grand Summit Hotel at Attitash
Bartlett, NH
September 22-24, 2002



NAHSL/NY-NJ 2001
Information & Technology:
Fitting the Pieces Together

Conference Sponsors

The 2001 Conference Planning Committee would like to thank our sponsors for their generous support.

Libraries

Baystate Medical Center, Health Sciences Library
Boston University, Alumni Medical Library
Brown University, Sciences Library
Dartmouth College, Biomedical Libraries
Hartford Hospital, Health Science Libraries
Harvard University, Countway Library of Medicine
Massachusetts General Hospital, Treadwell Library
Memorial Sloan-Kettering Cancer Center
New York Medical College
Tufts University, Health Sciences Library
University of Connecticut, Stowe Library
University of Massachusetts, Lamar Soutter Library
University of Vermont, Dana Medical Library
Yale University, Cushing/Whitney Medical Library

Conference Exhibitors

Basch Subscriptions/The Reference Shelf
Bridgeport National Bindery, Inc.
Copico, A Division of Mac-Gray Services, Inc.
CyberTools, Inc.
EBSCO Information Services
Faxon, RoweCom Library Services
Harpwell House, Inc.
Majors Scientific Books
Matthews Medical Books
MCSi East
MD Consult
Medical Library Association
Micromedex, Inc.
National Network of Libraries of Medicine--New England
National Organization for Rare Disorders--NORD
Ovid Technologies, Inc.
Ridley's Book Bindery, Inc.
Rittenhouse Book Distributors, Inc.
Stat!Ref
Swets Blackwell
TDNet Inc.
W. B. Saunders Co/Mosby/Churchill Livingstone
Elsevier Health Science, Div. of Elsevier Science

Vendors

Bridgeport National Bindery
EBSCO Subscription Services
Elsevier Science
MacGray/Copico
Majors Scientific Books
McGraw-Hill
OVID Technologies
Rittenhouse Book Distributors
Swets Blackwell

Organizations

CAHSL, Connecticut Association of
Health Science Librarians
Medical Library Center of New York
NAHSL, North Atlantic Health
Sciences Libraries
NY/NJ Chapter of the Medical
Library Association

www.basch.com
www.bnbindery.com
www.vendedcopiers.com
www.cybertoolsforlibraries.com
www.EBSCO.com
www.faxon.com AND www.rowe.com
www.harpwellhouse.com
www.majors.com
www.mattmccoy.com
www.MCSiEast.com
www.mdconsult.com
www.mlanet.org
www.mdx.com
nnlm.gov/ner
www.rarediseases.org
www.ovid.com
www.ridleysbookbindery.com
www.Rittenhouse.com
www.statref.com
www.swetsblackwell.com
www.tdnet.com

www.harcourthealth.com



NAHSL/NY-NJ 2001
Information & Technology:
Fitting the Pieces Together

Posters

Title: ***MLA Benchmarking Project***

Authors/Contributors: Janie Kaplan, Michelle Volesko

Contact Person: Janie Kaplan, Director

Institution: Hartford Hospital Health Science Libraries. Email: Kaplan@harthosp.org

Title: ***Top Ten Tips for Orienting Students to the Virtual and Physical Library***

Authors/Contributors: Zoha Tamadon, Ellen Maleszewski

Contact Person: Ellen Maleszewski, Informatics Librarian

Institution: State University at Stony Brook, Health Sciences Library. Email: ellen.debruin@sunysb.edu

Title: ***Making Sense of Molecular Medicine - New York Librarians' Involvement with Bioinformatics***

Authors/Contributors: Kristine M. Alpi, M.L.S., AHIP Information Services Librarian;

Gail Y. Hendler, M.L.S., AHIP, Coordinator of Outreach Services, New York University Medical School; Janet A. Ohles, M.L.S., Head, Information Services and Assistant Professor, Medical Sciences Library, New York Medical College

Contact Person: Kristine M. Alpi, M.L.S., AHIP, Information Services Librarian

Institution: Samuel J. Wood Library, Weill Medical College of Cornell University. E-Mail: kma2002@med.cornell.edu

Title: ***Reaching Beyond the Walls***

Author: Kimberly R. Lavoie, MA, MLS, Health Services Librarian

Contact Person: Kimberly R. Lavoie, MA, MLS, Health Services Librarian

Institution: Roger Williams Medical Center. E-mail: Klavoie@ids.net

Title: ***Square Pegs in the Catalog***

Author: Roseanne Krzanowski, MLS

Contact Person: Roseanne Krzanowski, MLS, Medical Librarian

Institution: Qualidigm. Email: rkrzanowski@qualidigm.org

Title: ***Sharpening the Focus: Adapting the Concept of the Focus Group to a Highly Specialized Library with a Small but Diverse Population***

Authors/Contributors: Kadri Niider, Elaine Wells

Contact Person: Elaine Wells, Library Director

Institution: Harold Kohn Vision Science Library, SUNY State College of Optometry. E-mail: ewells@sunyopt.edu

Title: ***THESISweb: A Digital Archive of Medical Student Scholarship***

Author: Charles J. Greenberg

Contact Person: Charles J. Greenberg, Head of Reference Services

Institution: Yale University, Harvey Cushing / John Hay Whitney Medical Library. E-mail: charles.greenberg@yale.edu

Title: ***Three Different Methods to Practice Clinical Librarianship***

Authors/Contributors: Helen -Ann Brown, Mary Jo Dorsey, Kristine Alpi

Contact: Helen -Ann Brown, Information Services Librarian

Weill Cornell Medical Library. E-mail: habrown@med.cornell.edu



NAHSL/NY-NJ 2001
Information & Technology:
Fitting the Pieces Together

Posters

Title: ***The NESCSO HIPAA Project: Charting the Course for New England***

Author: Nancy Peterson

Contact: Nancy Peterson, NESCSO Corporate Librarian

Institution: University of Massachusetts Medical School, Lamar Soutter Library. Email:
Nancy.Peterson@umassmed.edu

Title: ***How Did You Find That? The Odyssey of NOAH's Online Genetics Information for Patients.***

Authors/Contributors: Gail-Yvette Hendler, MLS, AHIP, Information Services Librarian, Memorial Sloan-Kettering Cancer Center, Medical Library, New York, NY; Kristine M. Alpi, MLS, AHIP, Information Services Librarian, Weill Medical College of Cornell University, Samuel J. Wood Library, New York, NY; Patricia E. Gallagher, MLS, AHIP, Information Specialist, New York Academy of Medicine, Library, New York, NY

Contact Person: Patricia E. Gallagher, Special Projects Coordinator

Institution: The New York Academy of Medicine. E-mail: pgallagher@nyam.org

Title: ***Surveying Your Patrons: A Vegetable Garden of Varieties and Choices***

Author: Jim Comes Ed.D., Associate Director

Contact Person: Jim Comes Ed.D., Associate Director

Institution: University of Massachusetts Medical School, Lamar Soutter Medical Library. E-mail:
james.comes@umassmed.edu

Title: ***Foodlink: A Nutrition Website for Foodstamp Recipients***

Authors/Contributors: Sharon Giovenale, MLS, Susan J. Beeman, M.S., R.D., Ann Ferris, Ph.D., R.D., Connie Cantor, B.S., Susan Schadt, B.A., Monica J. Belyea, M.P.H., R.D.

Contact Person: Sharon Giovenale, Pharmacy Librarian and Library Liaison to the Department of Nutritional Sciences

Institution: University of Connecticut. E-mail: sharon.giovenale@uconn.edu

Title: ***Webster: More Than Just a Dictionary***

Authors/Contributors: Richard J. Kahn MD & Patricia Kahn MLS

Contact person: Patty Kahn, Librarian

Institution: Penobscot Bay Medical Center. E-mail: pkahn@nehealth.org

Title: ***Creating, Teaching and Marketing an Internet Basics for Nurses Class at the Cambridge Health Alliance***

Author: Michelle Giberti

Contact Person: Michelle Giberti, Medical Librarian

Institution: Somerville Hospital, Cambridge Health Alliance. E-mail: mgiberti@challiance.org

